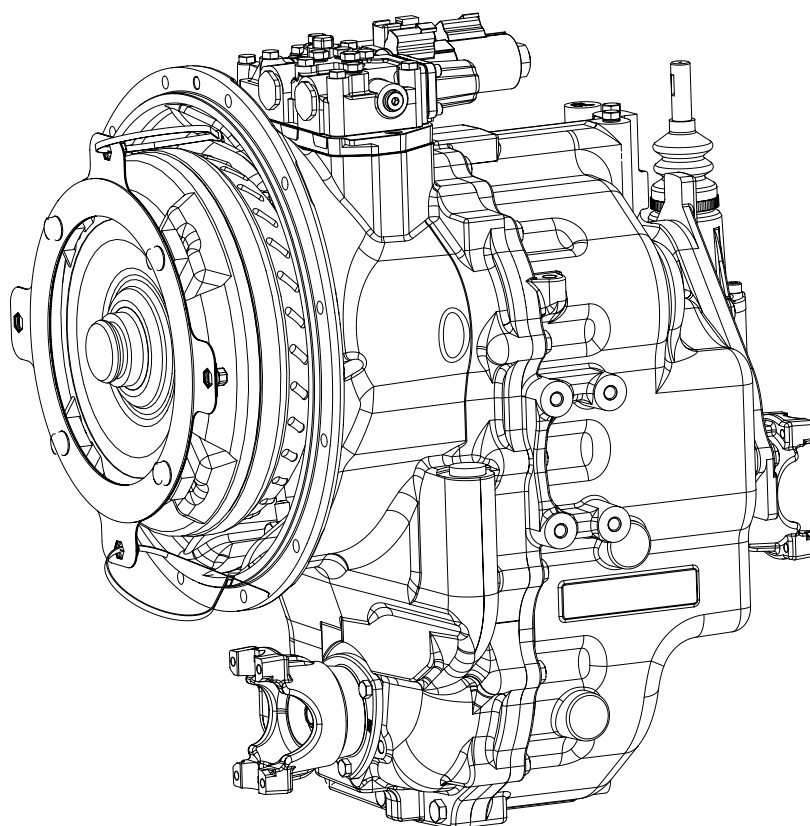


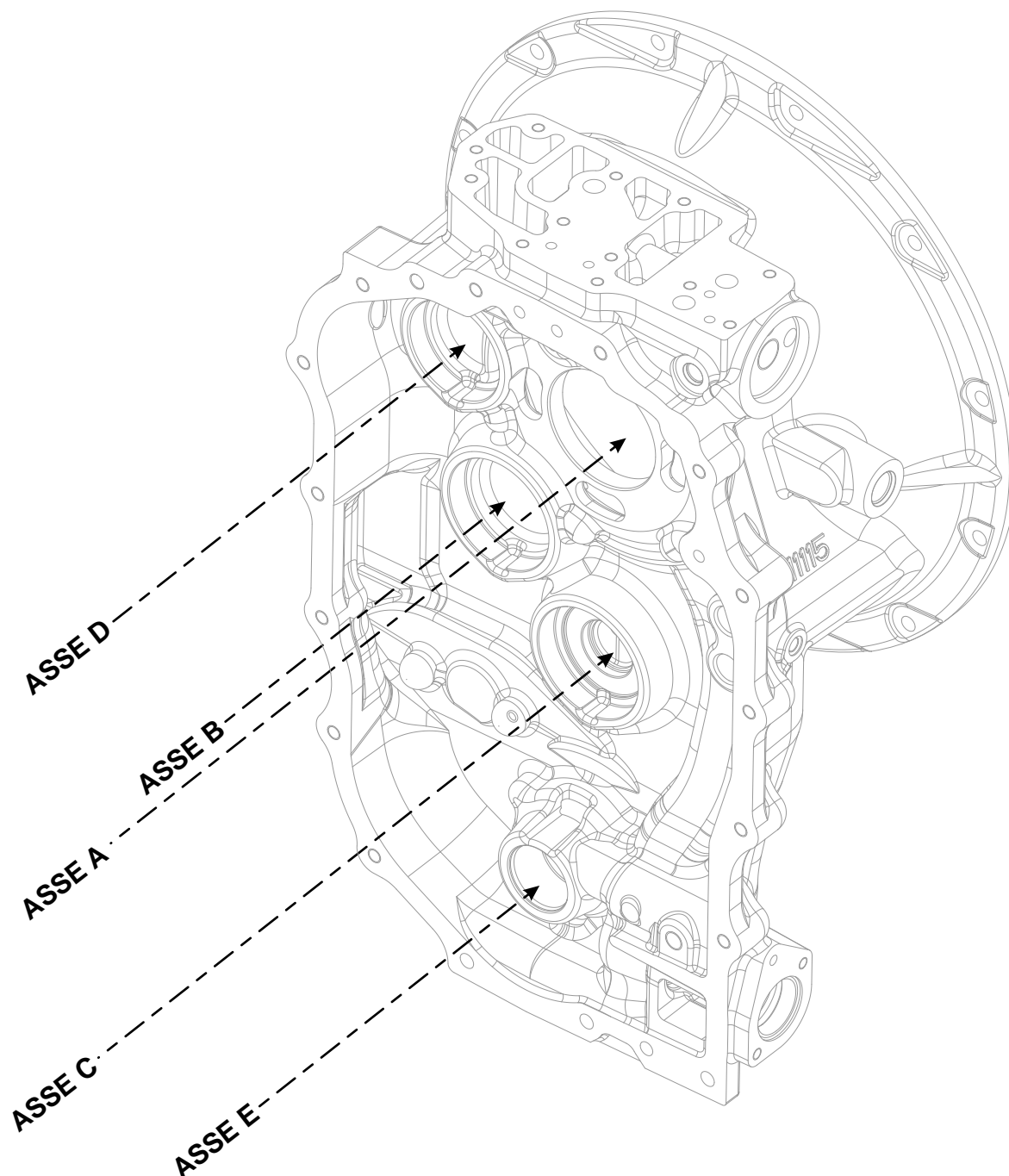


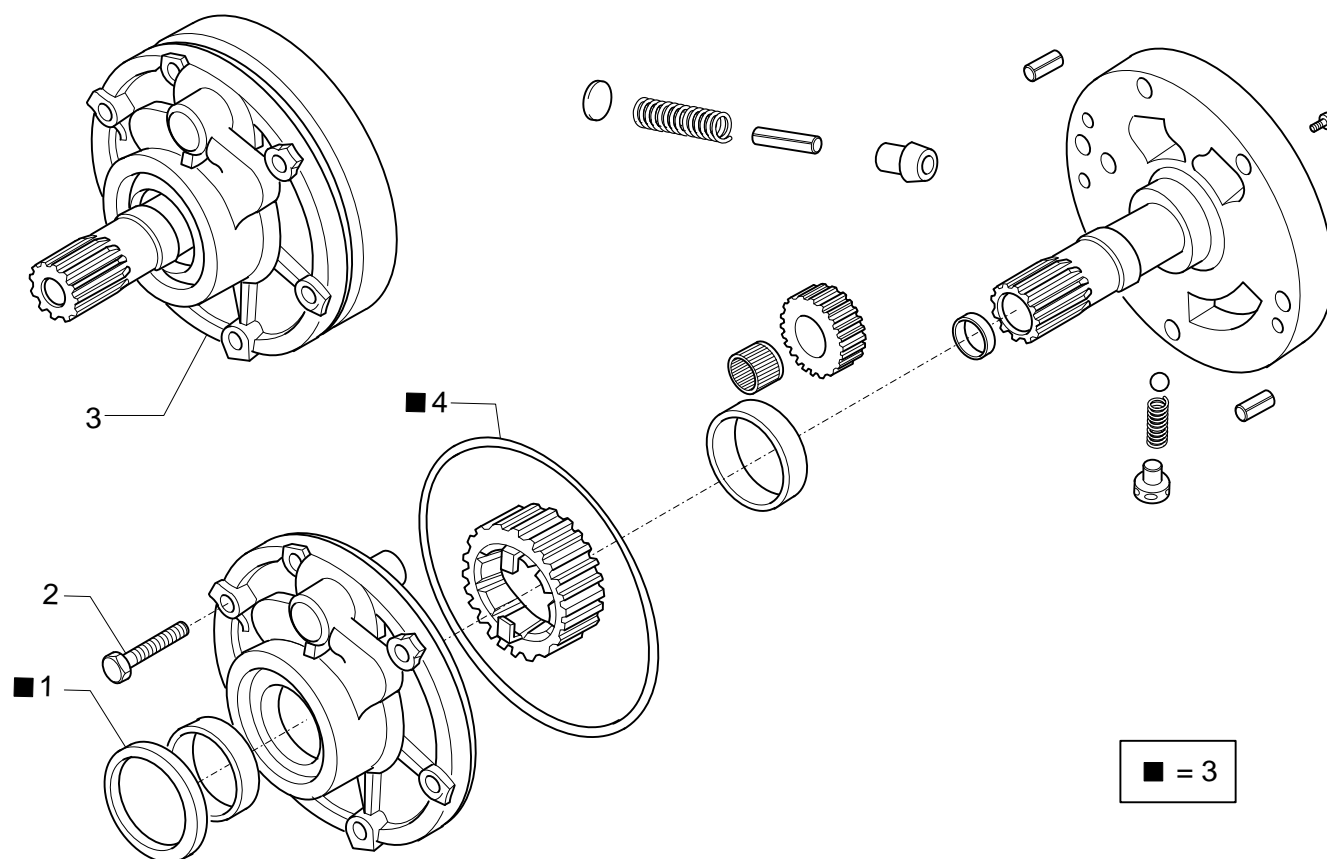
**Catalogo Parti Di Ricambio**  
***Spare Parts List***

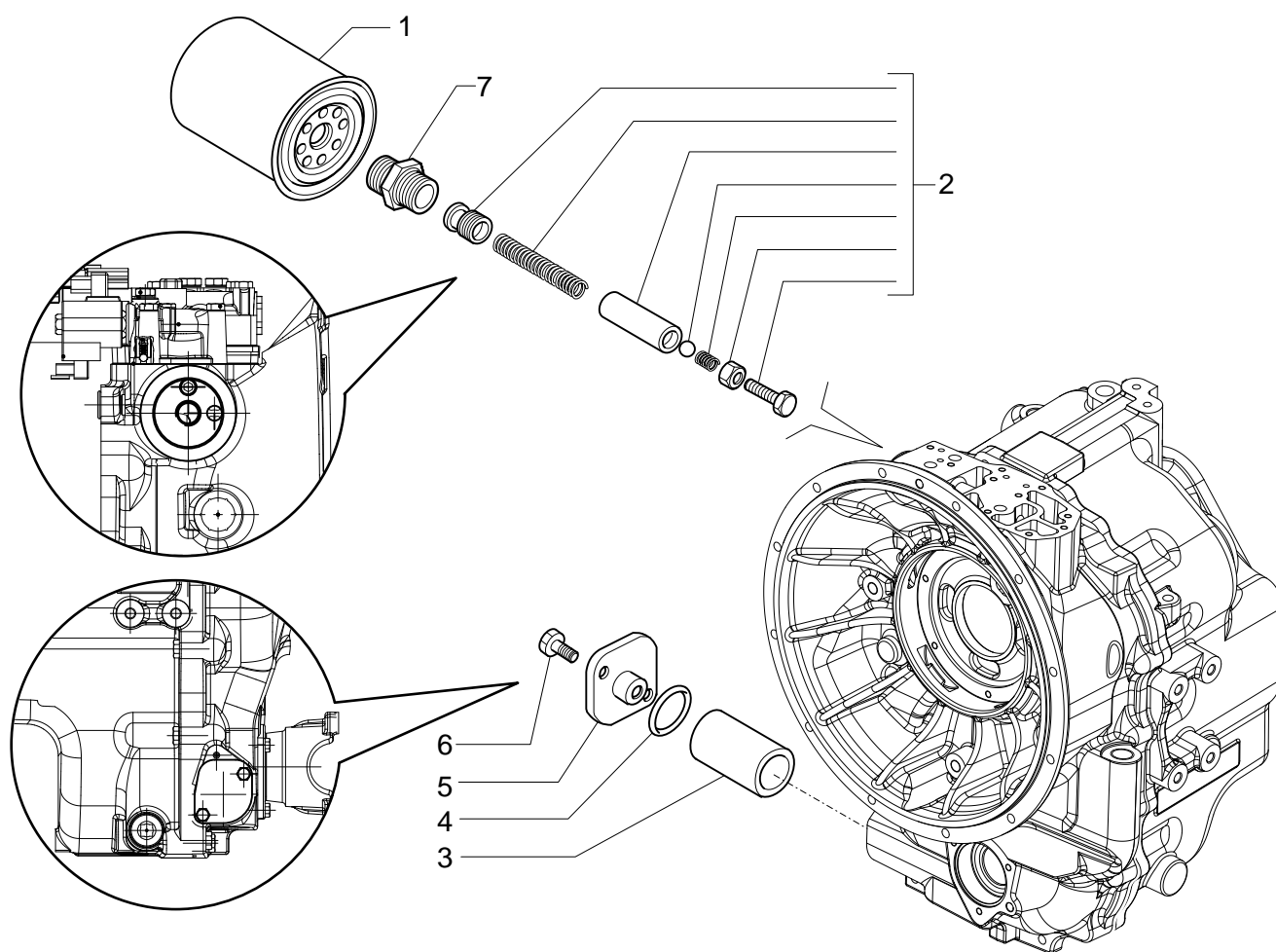


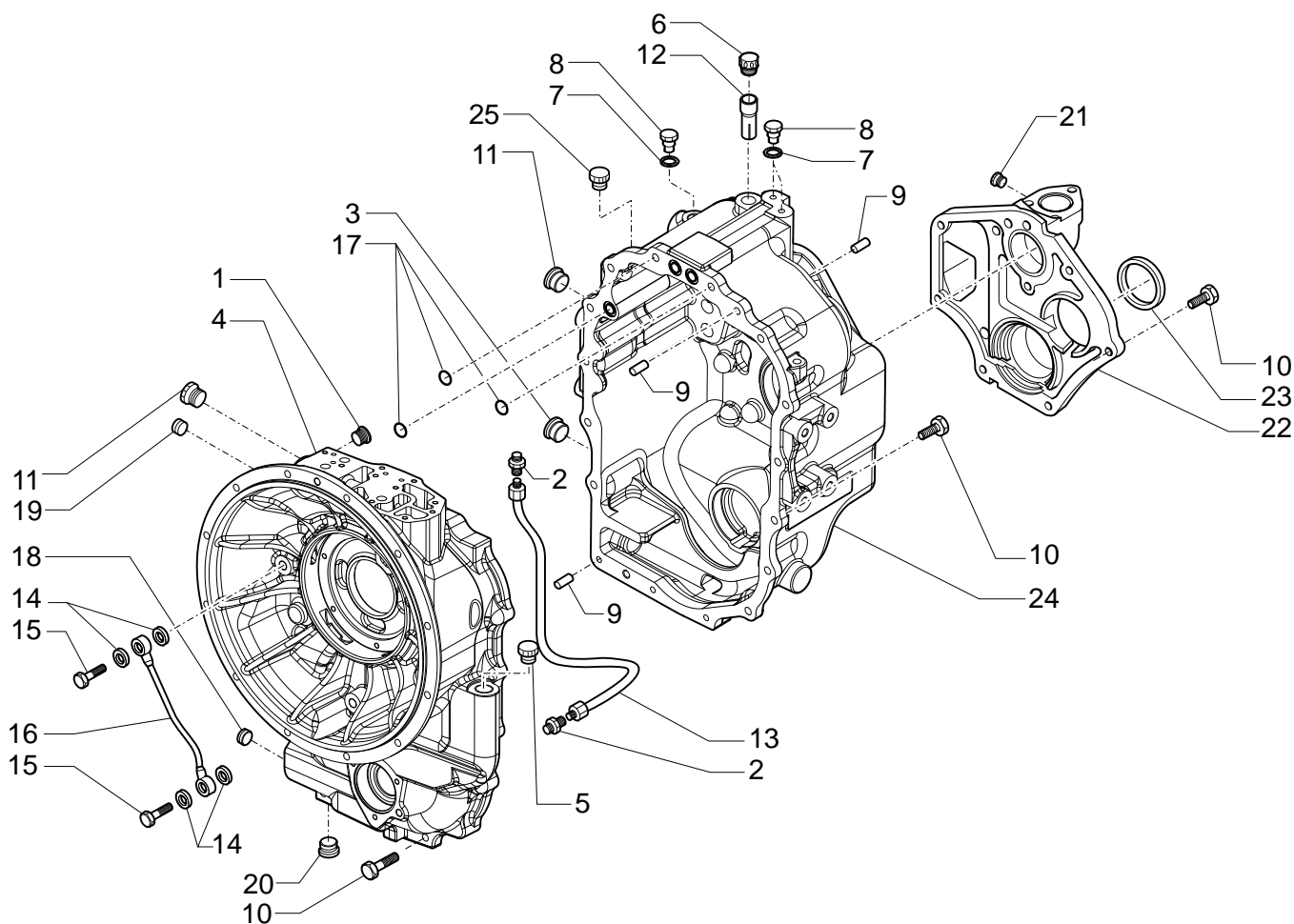
**TRASMISSIONE TLB1 4WD**  
***TLB1 4WD TRANSMISSION***  
**Ref. 643945**

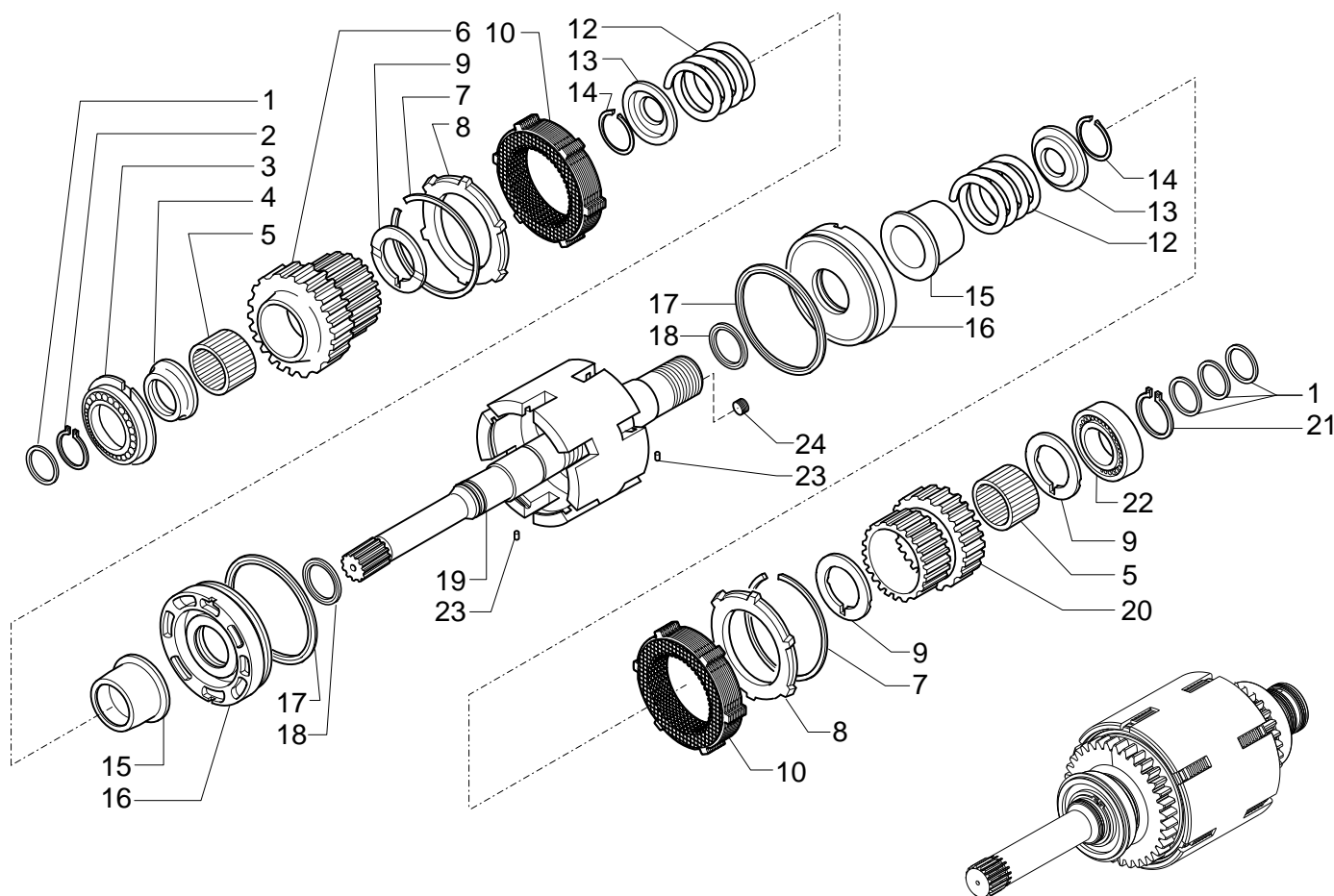
1.0.0	Assi <i>Axes</i>
2.0.0	Pompa olio <i>Oil pump</i>
3.0.0	Filtri <i>Filters</i>
4.0.0	Scatola trasmissione <i>Transmission housing</i>
5.0.0	Alberi entrata <i>Input shafts</i>
6.0.0	Albero rinvio e albero priimario <i>Reverse and primary shafts</i>
7.0.0	Albero secondario <i>Secondary shaft</i>
7.1.0	Albero secondario <i>Secondary shaft</i>
8.0.0	Albero 4WD <i>4WD shaft</i>
9.0.0	Comando marce <i>Speed control</i>
10.0.0	Distributore <i>Control valve</i>
10.1.0	Distributore <i>Control valve</i>
11.0.0	Elettrovalvola <i>Solenoid valve</i>
12.0.0	Convertitore <i>Torque converter</i>
13.0.0	Sommario kit <i>Kit summary</i>
13.1.0	Sommario kit <i>Kit summary</i>

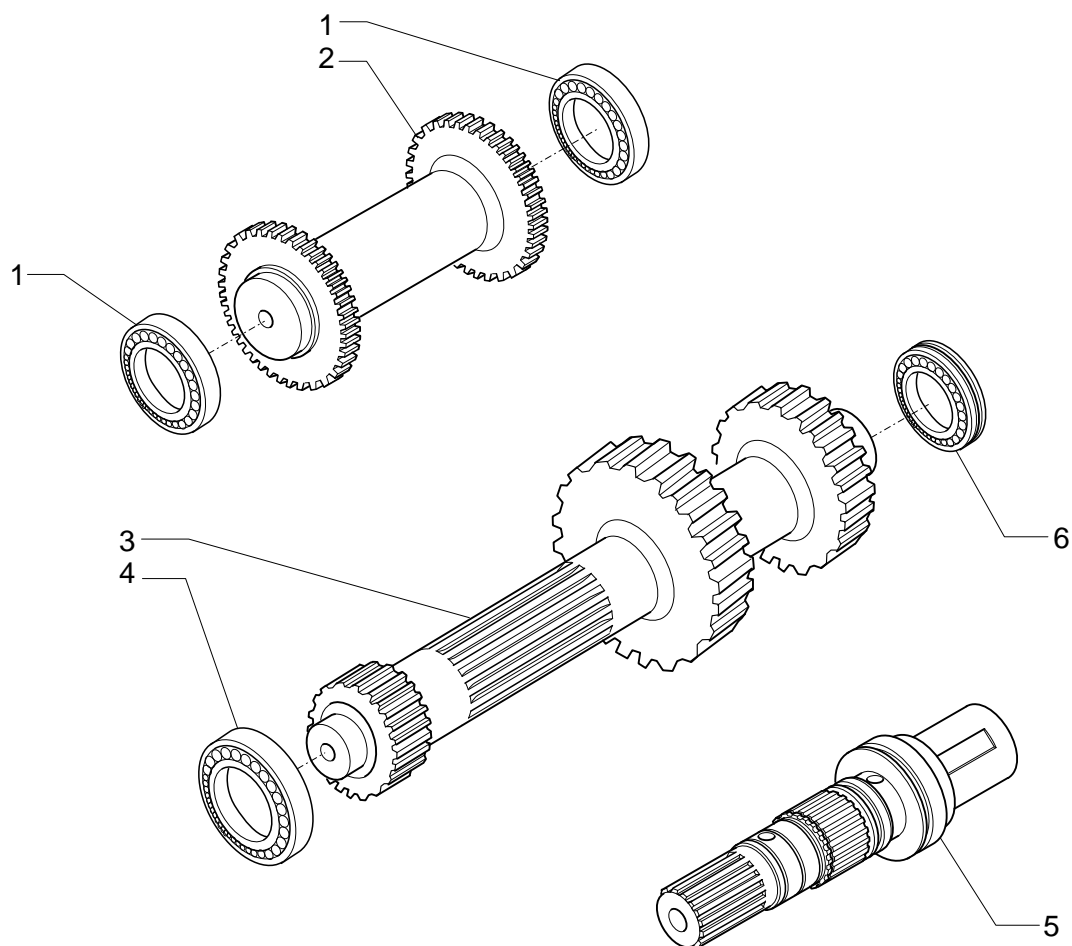
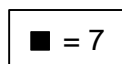


[illegible]

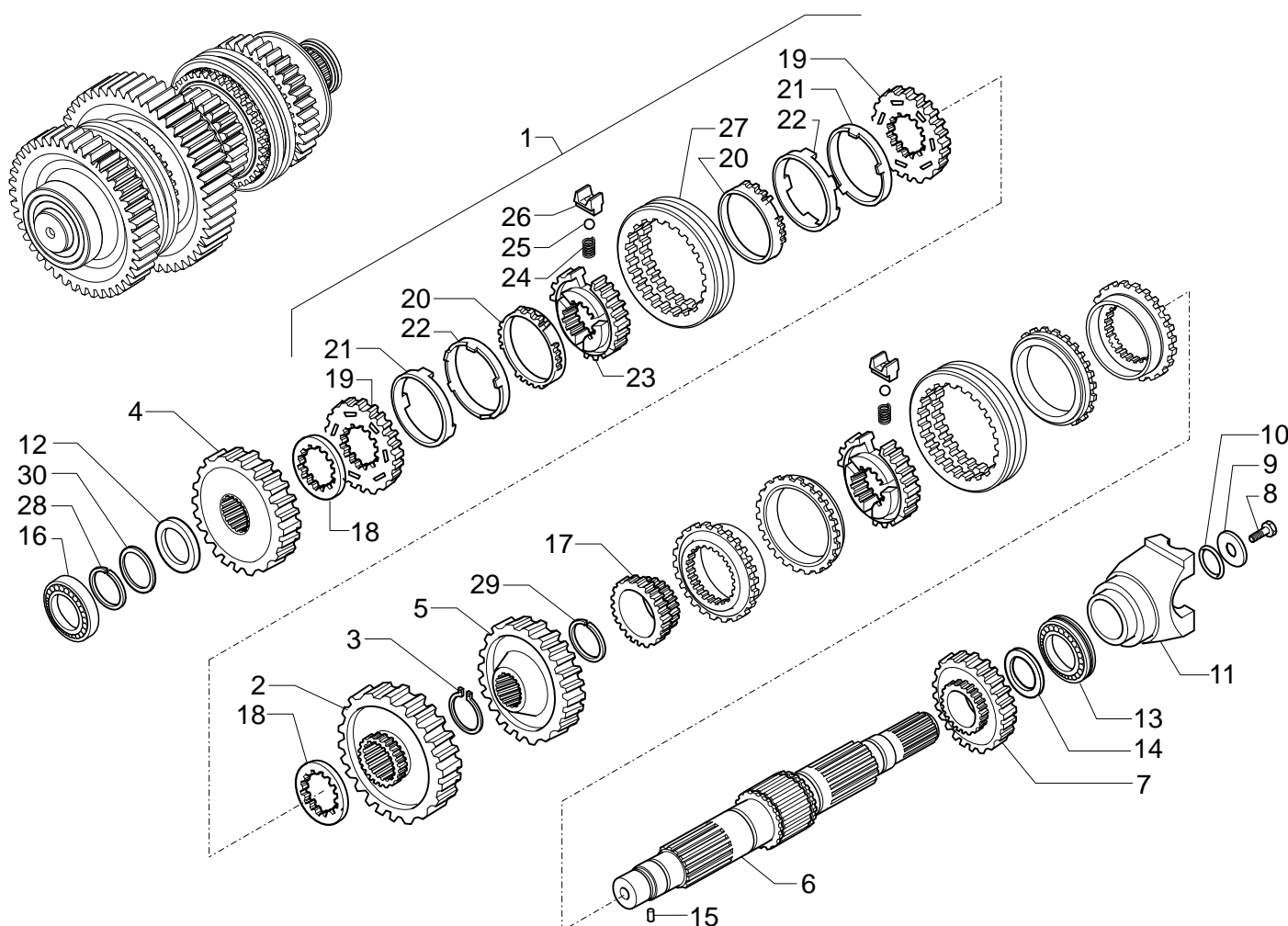
[illegible]

[illegible]

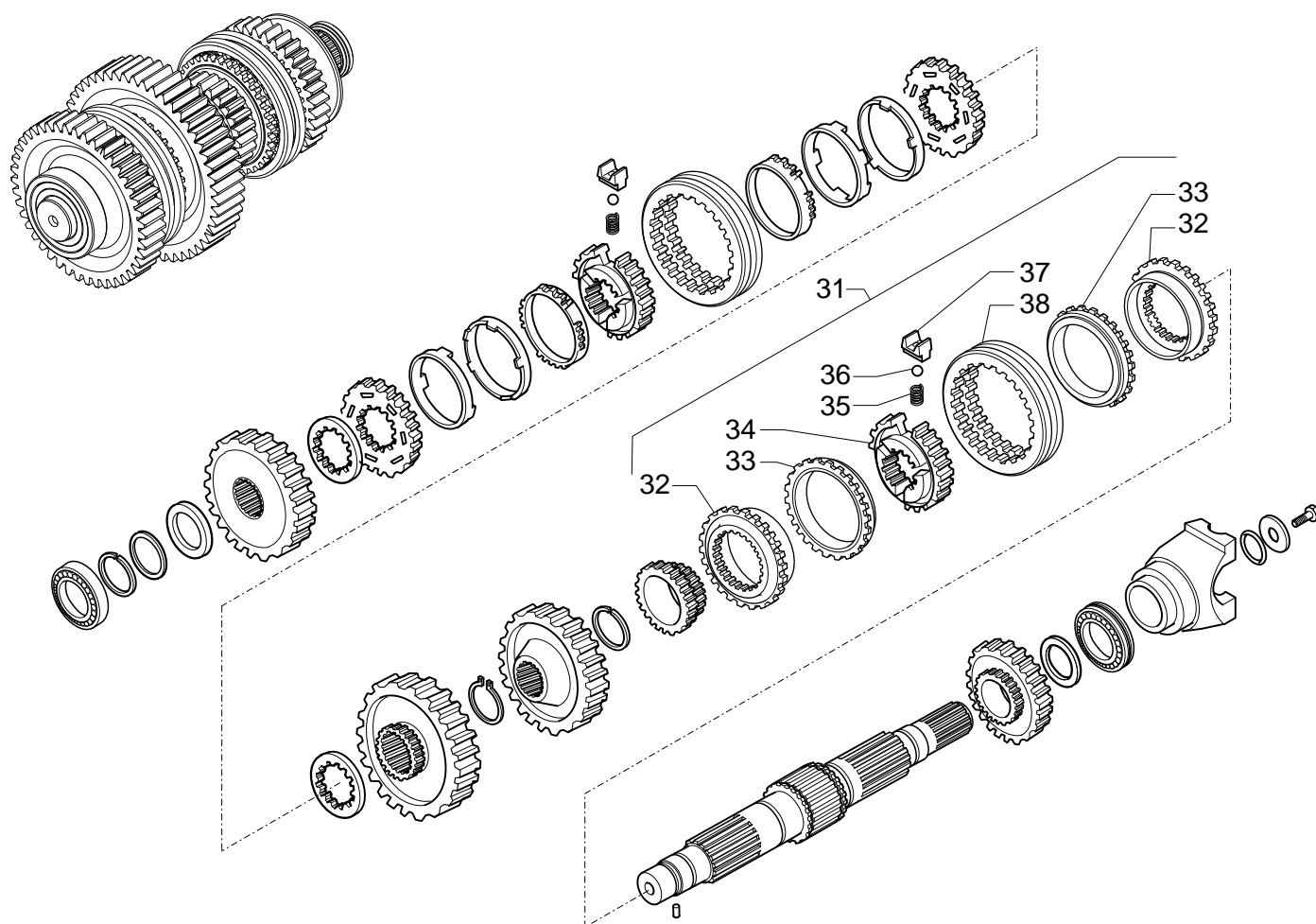
[illegible]

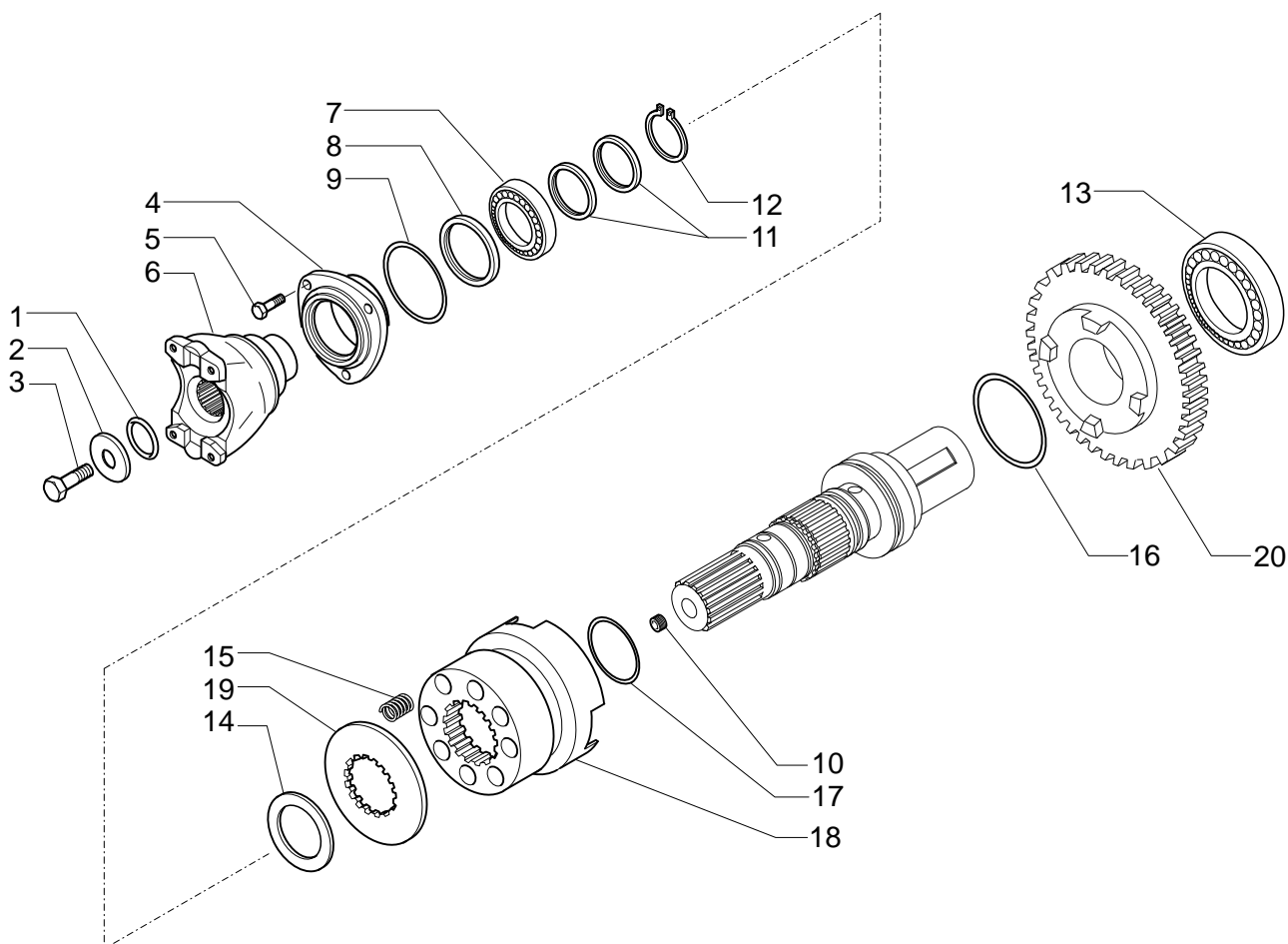
[illegible]

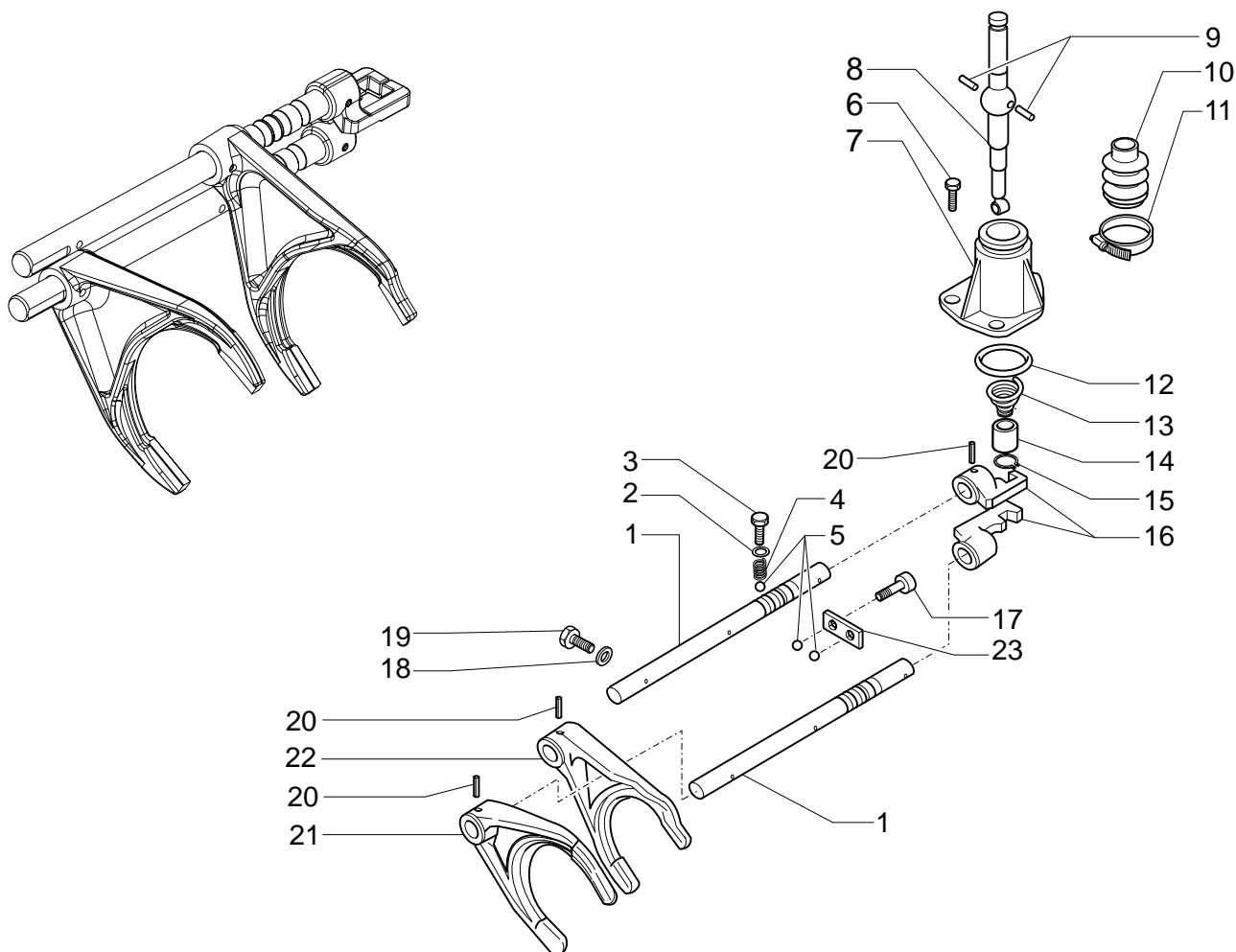


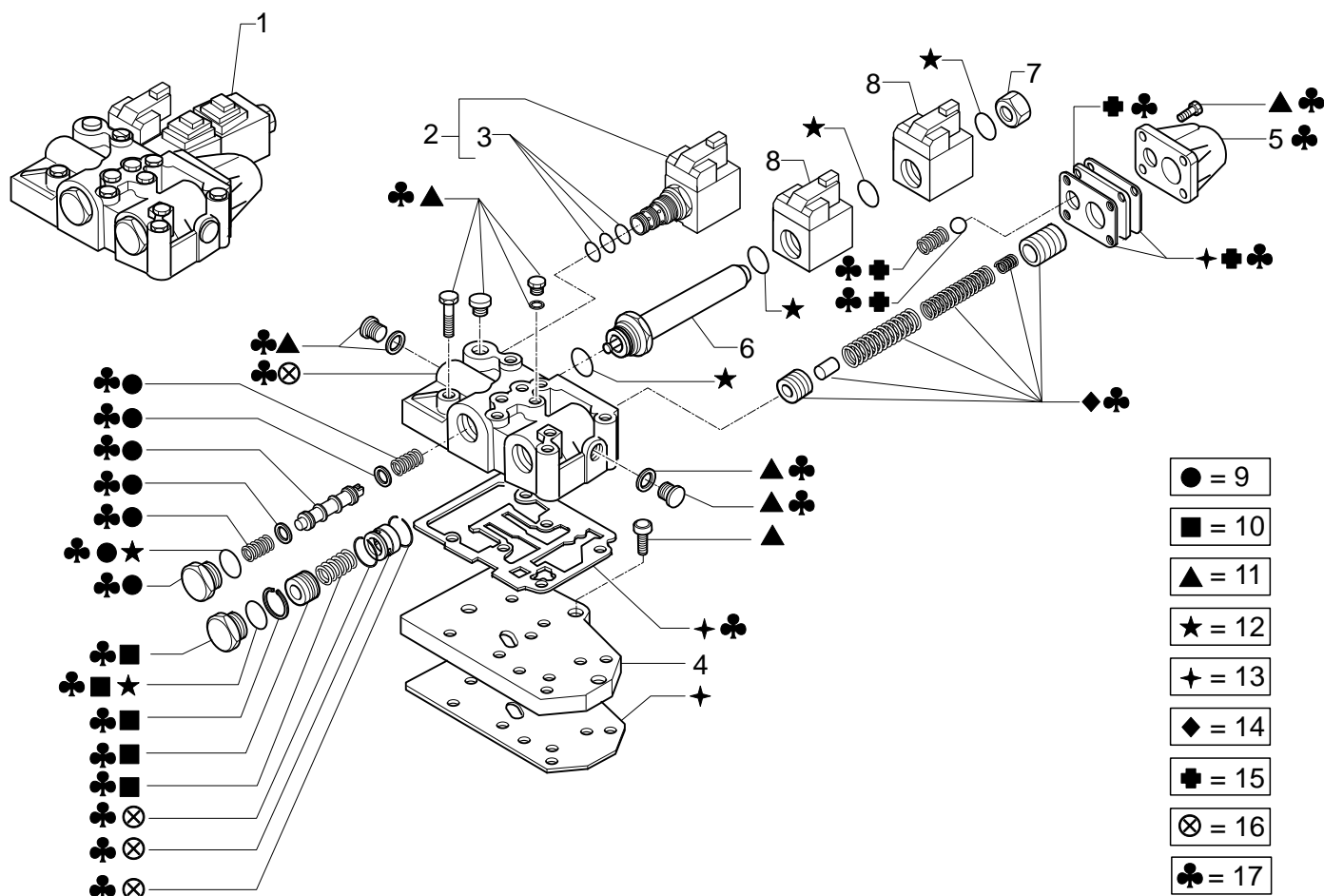


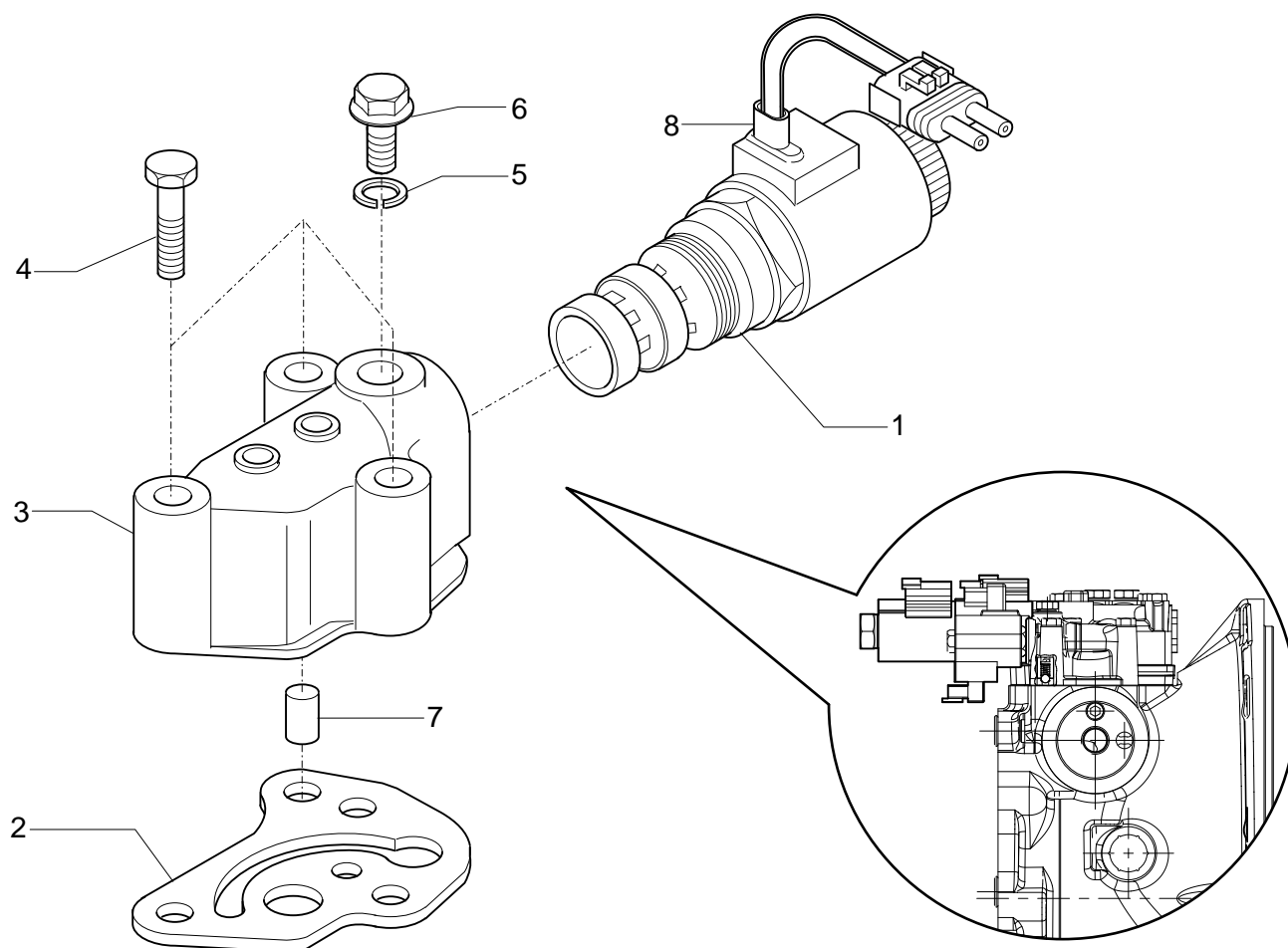
Pos.	Ref.	Q.ty	Descrizione	Description	Kit	Note
1	132637	1	Kit sincronizzatore	Synchronizing kit		
2	136766	1	Ingranaggio Z=49	Gear Z=49		
3	024817	1	Anello seeger	Snap ring		
4	139012	1	Ingranaggio Z=43	Gear Z=43		
5	138980	1	Ingranaggio Z=44	Gear Z=44		
6	138971	1	Albero secondario	Secondary shaft		
7	138969	1	Ingranaggio Z=33	Gear Z=33		
8	123918	1	Vite M12x1.25x25	Bolt M12x1.25x25		
9	129924	1	Rondella 52x12.5x25	Washer 52x12.5x25		
10	028623	1	Anello OR	O.ring		
11	137303	1	Flangia	Flange		
12	139010	1	Ralla 64x40x6	Thrust washer 64x40x6		
13	026190	1	Cuscinetto	Bearing		
14	138985	1	Ralla 65x45x4	Thrust washer 65x45x4		
15	024321	1	Spina elastica D3x8	Split pin D3x8		
16	027554	1	Cuscinetto	Bearing		
17	138970	1	Ingranaggio Z=23	Gear Z=23		
18	132867	2	Distanziale	Spacer		
19	046305	2	Anello innesto	Clutch ring	132637	
20	046306	2	Cono frizione est.	Outward friction cone	132637	
21	046308	2	Cono frizione int.	Inwadr friction cone	132637	
22	046307	2	Anello bicono	Biconical ring	132637	
23	046304	1	Mozzo	Hub	132637	
24	046303	3	Molla	Spring	132637	
25	046301	3	Sfera	Ball	132637	
26	046302	3	Tassello sincro	Synchro boss	132637	
27	046300	1	Manicotto scorrevole	Sleeve	132637	
28	025053	1	Anello d'arresto	Lockring		
29	025061	1	Anello arresto	Lock ring		
30	132813	-	Spessore 0.5	Shim 0.5		
30	132814	-	Spessore 0.10	Shim 0.10		
30	132815	-	Spessore 0.30	Shim 0.30		
30	133360	-	Spessore 0.50	Shim 0.50		

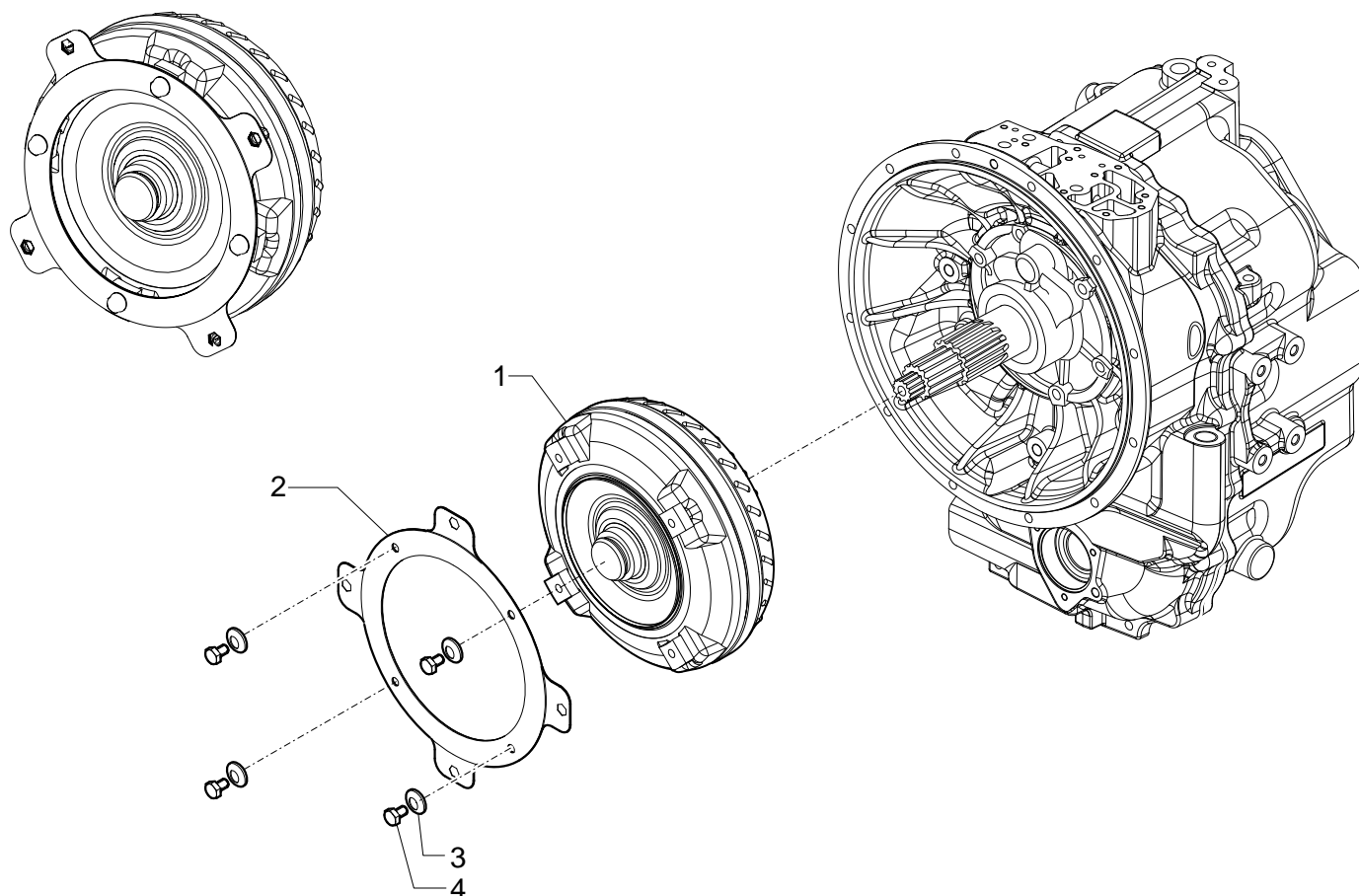
[illegible]

[illegible]

[illegible]

[illegible]

[illegible]

[illegible]



Kit	Ref.	Descrizione	Description	Q.ty	Note
132637	-	Kit sincronizzatore	Synchronizing kit	-	
	046308	Anello frizione conico	Tapered friction ring	2	
	046305	Anello sincronizzatore	Synchronizing ring	2	
	046303	Molla	Spring	3	
	046304	Mozzo	Hub	1	
	046306	Anello sinterizzato	Sintered ring	2	
	046307	Anello d'acciaio	Steel ring	2	
	046302	Placchetta fermo molla	Lock-spring plate	3	
	046301	Sfera	Ball	3	
	046300	Manicotto scorrevole	Sleeve	1	
138548	-	Kit sincronizzatore	Synchronizing kit	-	
	046329	Anello d'innesto	Clutch ring	2	
	046328	Mozzo	Hub	1	
	046330	Anello frizione conico	Ring	2	
	046326	Tassello	Plate	3	
	046314	Perno	Pin	3	
	046327	Molla	Spring	3	
	046325	Manicotto scorrevole	Sleeve	1	
644561	-	Distributore	Control valve	-	
-	146640	Elettrovalvola	Electro-valve	1	
-	049677	Kit guarnizioni	Seal kit	1	
-	131328	Piastra distribuzione	Feeding plate	1	
-	132912	Coperchio valvola	Valve cover	1	
-	134125	Tubo per solenoide	Solenoid pipe	1	
-	642100	Tappo	Plug	1	
-	642096	Bobina elettrovalvola	Electr-valve coil	2	
-	068421	Kit FWD/RVS	FWD/RVS spool Kit	1	
-	068422	Kit pistone divisore di flusso	Flow divider piston Kit	1	
-	068423	Kit viti	Bolts kit	1	
-	068424	Kit anelli di tenuta	Seal rings kit	1	
-	068425	Kit guarnizioni	Gaskets kit	1	
-	068426	Kit valvola di modulazione	Modulation valve kit	1	
-	068427	Kit piastrina	Plate kit	1	
-	068428	Kit corpo distributore	Control valve kit	1	
146640	-	Elettrovalvola	Electro-valve	-	
-	049677	Kit guarnizioni	Seal kit	1	
068421	-	Kit FWD/RVS	FWD/RVS spool Kit	-	
-	-	Anello OR	O.ring	1	
-	-	Rondella	Washer	2	
-	-	Tappo M26x1.5	Plug M26x1.5	1	
-	-	Pistone FWD/RVS	FWD/RVS piston	1	
-	-	Molla	Spring	2	
068422	-	Kit pistone divisore di flusso	Flow divider piston Kit	-	
-	-	Anello seeger ø22	Snap ring ø22	1	
-	-	Pistone	Piston	1	
-	-	Molla	Spring	1	
-	-	Anello OR	O.ring	1	
-	-	Tappo	Plug	1	
068423	-	Kit viti	Bolts kit	-	
-	-	Tappo	Plug	4	
-	-	Rondella rame	Copper washer	4	
-	-	Tappo	Plug	1	
-	-	Vite M8x80	Bolt M8x80	6	
-	-	Tappo	Plug	2	
-	-	Rondella rame	Copper washer	2	
-	-	Vite M8x20	Bolt M8x20	3	
-	-	Vite M6x20	Bolt M6x20	4	
068424	-	Kit anelli di tenuta	Seal rings kit	-	



[illegible]